



**USER GUIDE  
FOR MASSAGE  
CHAIR 6104**

## CONTENT

GROUNDING INSTRUCTIONS.....	1
ASSEMBLY INSTRUCTIONS.....	2
CONTROLLER.....	3-4
PART NAME.....	5-6
SAFETY INSTRUCTIONS.....	7-8
SPECIFICATIONS.....	9

## GROUNDING INSTRUCTIONS

This product must be grounded. Should it break down or malfunction, grounding will provide a path of least resistance for electric current to reduce the risk of electric shock.

This product is equipped with a cord that has an equipment-grounding conductor and a grounding plug. The plug must be plugged into an appropriate outlet that is properly in accordance with all local codes and ordinances.

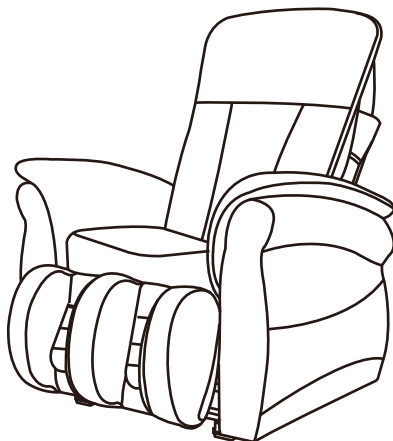
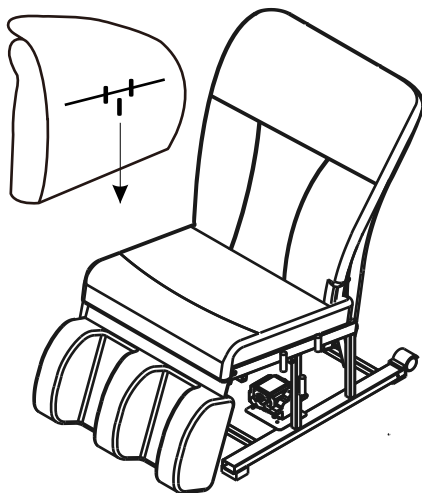
**DANGER:** Improper connection of the equipment-grounding conductor can result to a risk of electric shock. Check with a qualified electrician or serviceman if you are in doubt on as to whether the product is properly grounded or not. Do not modify the plug provided along with the product. If the plug does not fit in the outlet, have a qualified electrician install a proper outlet.

This product is for use on a nominal 240-volt circuit and has a grounding plug that is similar to what is illustrated below. Please ensure that the product is connected to an outlet that has the same configuration as the plug.



## ASSEMBLY INSTRUCTIONS

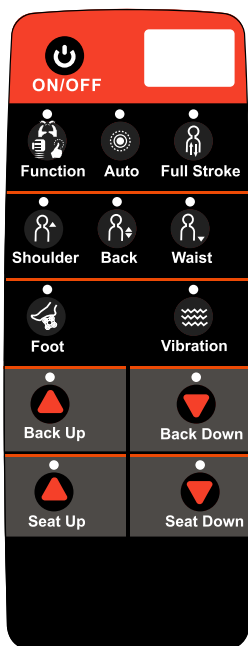
Lift up and insert the prongs on the inner side of the armrest into holes at the edge of the seat frame.



# CONTROLLER

## ATTENTION!

For your safety, please adjust the seat of the chair only when all programs have completely stopped.



### 1.ON/OFF

Press button to turn on power for 15 minutes auto mode, press it again to turn off.



### 2.Function

Press this key under “Manual” mode to choose function out of kneading (red), rolling (yellow), and tapping together (green).



### 3.Auto

Press during any operation mode will return to auto-mode. Press button again to activate manual mode.



### 4.Full Stroke

Auto full back is the default mode. Press this key to switch to manual full back mode, all procedure will be set up by yourself. Press this key again to switch to auto full back mode.



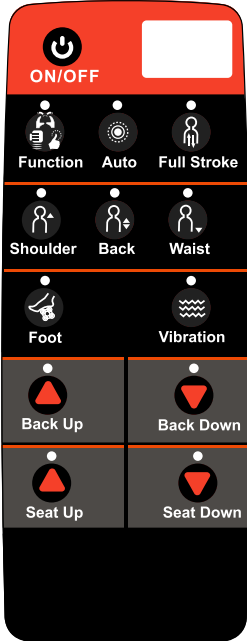
### 5.Shoulder

Press button to deactivate back-range-massage and waist-range-massage with indicator turned off, left with shoulder-range.



### 6.Back

Press button to deactivate shoulder-range-massage and waist-range-massage with indicator turned off, left with back-range.



### 7. Waist

Press button to deactivate shoulder-range-massage and back-range-massage with indicator turned off, left with waist-range.



### 8. Foot

Press button to turn on the foot massage.



### 9. Vibration

Press button to turn on vibration.



### 10. Back Up

Press this button to raise backrest and descend the footrest. Press again to anchor at desired position.



### 11. Back Down

Press this button to descend backrest & raise the footrest. Press again to anchor at desired position.



### 12. Seat Up

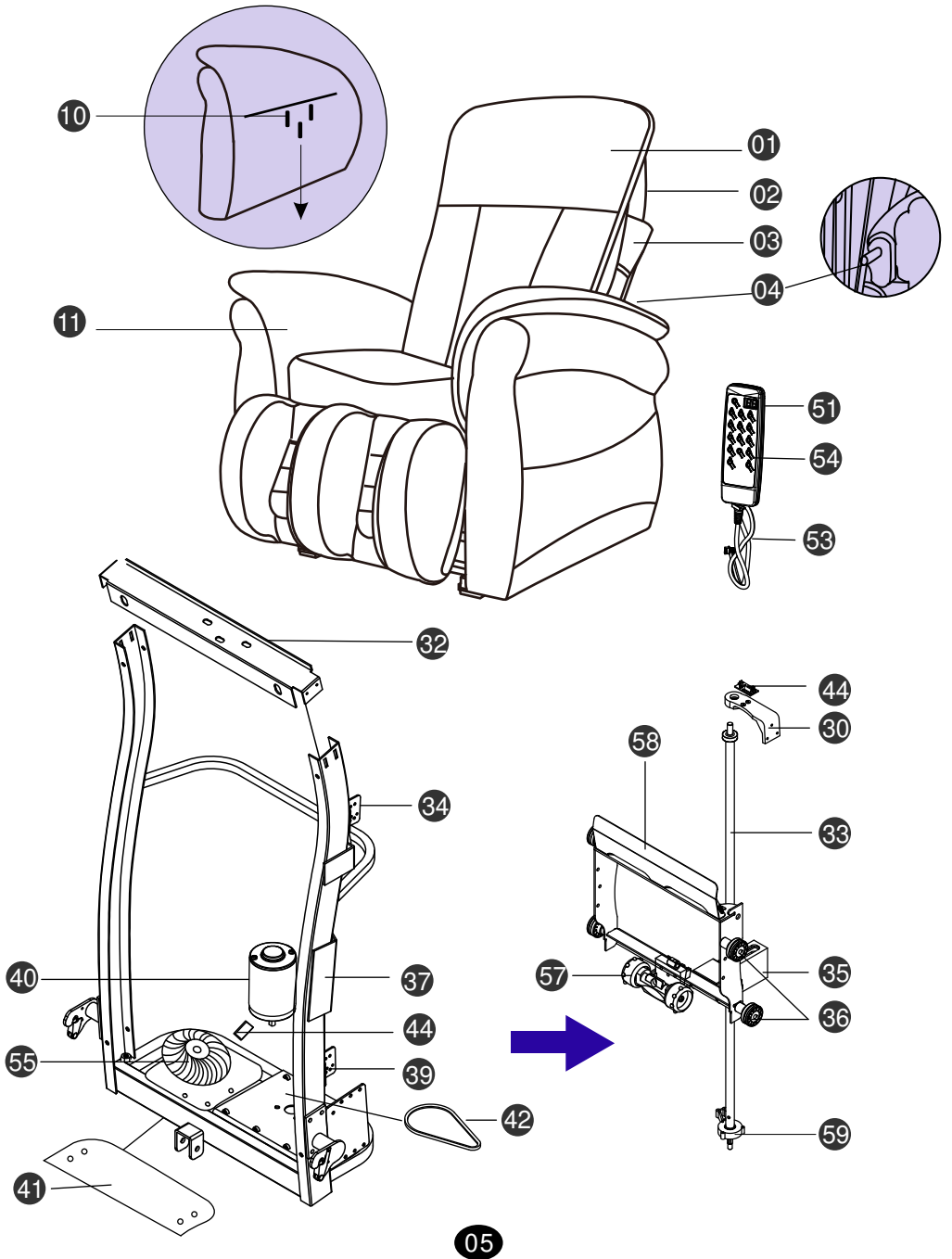
Press this button to lift up the chair seat.

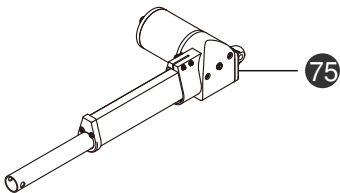
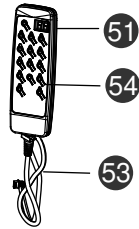
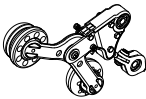
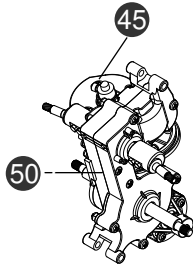
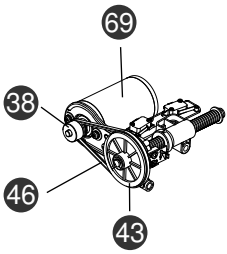
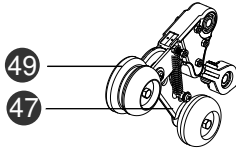
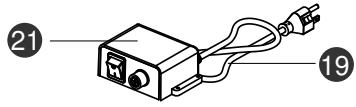
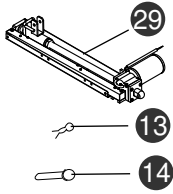
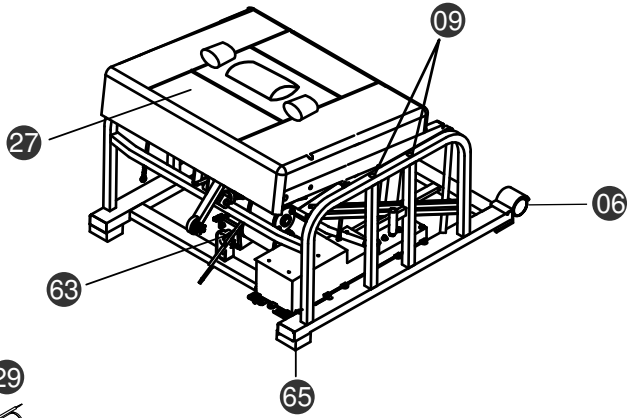


### 13. Seat Down

Press this button to descend the chair seat.

**PART NAME**







## Parts List

<b>01</b> Back Pad	<b>46</b> Belt
<b>02</b> Back Plastic Cover	<b>47</b> Massage Arm
<b>03</b> Back Shell with Fabric	<b>49</b> Massage Roller
<b>04</b> Claws	<b>50</b> Massage Unit
<b>06</b> Caster Wheel	<b>51</b> Remote Control
<b>07</b> Armrest, Left	<b>53</b> Wire-Remote Control
<b>08</b> Footrest / Calf Device	<b>54</b> PCB Assembly - Remote
<b>09</b> Locating Sleeve for Armrest	<b>55</b> Transformer
<b>10</b> Prong	<b>57</b> Fixed Supporting Rollers
<b>11</b> Armrest, Right	<b>58</b> Spine Remedy Sliding Bracket
<b>12</b> Posture Cable Loop	<b>59</b> Bottom Bearing Bracket
<b>13</b> Segment(split)/Cotter Pin	<b>63</b> Footrest Lifting Motor
<b>14</b> Pin/Detent Pin	<b>65</b> Base Pad
<b>21</b> Power Supply Switch Box	<b>67</b> Pillow
<b>27</b> Seat Cushion	<b>69</b> Tapping Motor
<b>29</b> Recline Kit	<b>75</b> Lift Up Motor
<b>30</b> Bearing Bracket	
<b>32</b> U-groved Bar	
<b>33</b> Driving Shaft	
<b>34</b> Upper Limit Switch	
<b>35</b> Lubrication Box	
<b>36</b> Guide Wheel	
<b>37</b> PCB	
<b>38</b> Pulley	
<b>39</b> Lower Limit Switch	
<b>40</b> Driving Motor	
<b>41</b> Chair-back Bottom Cover	
<b>42</b> Belt	
<b>43</b> Pulley	
<b>44</b> Signal Sensor	
<b>45</b> (Kneading) Motor	

## **SAFETY INSTRUCTIONS**

Use the chair with basic precautions; lift back-pad prior to use in order to check all materials are in good condition. If any material is found torn, please unplug power and contact your local dealer for instructions and replacement.

Improper connection of the equipment-grounding conductor can result in risk of electric shock, check with qualified electrician or serviceman if in doubt. Have the power outlet installed by qualified electrician if the plug does not fit.

DO NOT modify the provided plug.

DO NOT wind any cords around remote control to prevent possible electric shock or cause fire.

DO NOT allow children to use, play on or around it.

DO NOT stand on arm-rest, foot-rest or back-rest to avoid falling over.

DO NOT suddenly release hand while raising the foot-rest with hand.

DO NOT suddenly stand up during the process of lifting to avoid falling over.

### **SAFETY PRECAUTIONS**

Attention:

**DO NOT USE THE CHAIR IF THE FABRIC IS TORN OR IS NOT IN GOOD CONDITION.**

If the supply cord is damaged, it must be replaced by a special cord or assembly available from the manufacturer or its service agent.

EUT shall operate correctly in normal use under the following conditions:

- A) An ambient temperature range of +10 to +40.
- B) A relative humidity range of 30% to 75%.
- C) An atmospheric range of 700 hpa to 1060 hpa.

## BEFORE USE

- A. Place chair on flat and solid ground close to a power outlet with good grounding.
- B. Follow user guide to assemble all parts and ensure complete setup.
- C. Make sure power switch is at “OFF” position; the power switch is at the back of the chair.
- D. Keep wire away from heater; do not share power point(s) or extension wire with another electrical appliance.
- E. Avoid blocking airway; do not put any items on the chair.

We recommend you to wear loose and comfortable clothes, no collars, no wristbands, and do not put any solid objects in pockets.

For those with any of the following conditions, please consult doctor before use:

- 1. Feeling sick or wounded
- 2. Heart disease patient
- 3. Cancer or Tumour patient
- 4. Pregnant or during menstrual period
- 5. Spinal cord abnormalities, bent or bone disease
- 6. Neural disease, paraplegic (apoplexy), cripple, weak, mental disorders
- 7. After meals or drastic sport
- 8. Children under 18 years old
- 9. Those with medical electronic devices implanted
- 10. Serious blood circulation disorder in the legs

## SPECIFICATIONS

SPEC.	Description
Voltage	240-Volt Circuit
Massage Functions	kneading, rolling, and tap-kneading massage
Vibration Frequency	4549-5050 rpm/min
Lift up capacity	160 Kgs
Reclining degrees	190°
Max Time	Preset 15 minutes,
Leatherette material	PVC